

AVAILABLE SERVICES INCLUDE:

- Individual evaluations of students with 22q11.2 deletion syndrome at their schools
- Detailed, understandable, and practical staff training
- Objective and expert assistance to aid in the development of IEPs, behavior plans, residential, and day programs
- Anticipatory health guidance
- Genetic counseling for families



For more information contact:

Brenda Finucane, MS, CGC
Phone: 610-891-2313
Fax: 610-891-2377
Email: brenda_finucane@elwyn.org
www.elwyngenetics.org

Genetic Services at Elwyn
111 Elwyn Road
Elwyn, Pennsylvania 19063

22q11.2 Deletion Syndrome

Consultative Services For Schools



Maximizing Potential
Elwyn
Since 1852

GENETIC SERVICES AT ELWYN

Your Source for Current and Practical Information About the 22q11.2 Deletion Syndrome

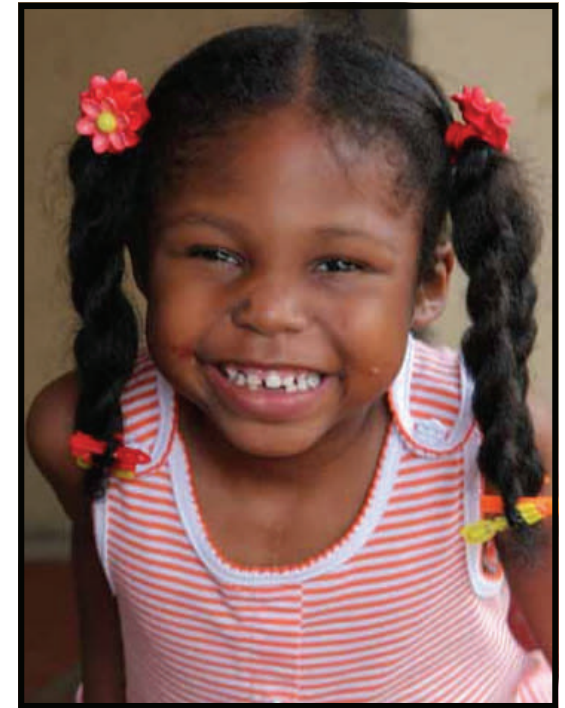
The 22q11.2 deletion syndrome is a recognizable pattern of physical and developmental features associated with a missing section of genetic material on chromosome 22. The condition is sometimes referred to as velo-cardio-facial syndrome (VCFS) or DiGeorge syndrome. The effects of the deletion include a variety of physical findings, such as heart abnormalities, cleft palate, immune deficiencies, and a characteristic facial appearance. In addition, children and adults with the 22q11.2 deletion syndrome may show a spectrum of developmental issues, including learning, social, and emotional challenges.

Many professionals first hear about the 22q11.2 deletion syndrome when they begin working with a student who has this diagnosis. At Elwyn, we have extensive knowledge and expertise with this special population. We offer consultative services for individual students, as well as staff training to help schools address the complex needs of children and adolescents with the syndrome. Our staff travel throughout the US and Canada to provide on-site consultations at a child's school and / or home. Let us show you how Elwyn's expertise can make a lasting difference in the lives of these students.

Fast Facts About the 22q11.2 Deletion Syndrome

- Caused by a missing piece (deletion) of genetic material on chromosome 22.
- One in every 2,000 to 4,000 babies is born with the syndrome.
- The diagnosis is confirmed through genetic blood testing called FISH analysis.
- Students with the deletion often face medical, behavioral, and learning challenges, including:
 - ⇒ Heart defects
 - ⇒ Feeding difficulties
 - ⇒ Digestive problems
 - ⇒ Reduced immunity to infection
 - ⇒ Behavioral differences, such as attention deficits and autism
 - ⇒ Intellectual disabilities
 - ⇒ Psychiatric disorders
 - ⇒ Hearing and vision problems

To learn more, visit the
International 22q11.2 Deletion Syndrome Foundation
at www.22q.org



Founded in 1852, Elwyn is a nonprofit corporation which has been providing services to people with special needs for over 150 years. Today, Elwyn is nationally-recognized as a pioneer in developing groundbreaking programs for children and adults with disabilities and disadvantages. Our office of Genetic Services is a leader in genetics research and education, specializing in the practical implications of genetic disorders in people with developmental disabilities.

Visit us at www.elwyngenetics.org or call 610-891-2313 to learn more about our staff training and consultative services for students with the 22q11.2 deletion syndrome and other genetic conditions.